



Dolphin Yachts

INTERNATIONAL YACHT BROKERS

Dolphin Yachts S.L.

Club de Mar

07015 Palma de Mallorca

Spain

info@dolphin-yachts.com



Sunseeker 28 Metre Yacht

Производитель:	Sunseeker	Длина:	28.15m (92'4")
Модель:	28 Metre Yacht	Ширина:	6.50m (21'3")
Год выпуска:	2012	Осадка:	2.05m (6'7")
Материал:	Стеклопластик	Топливо:	9.000 Litres
Размещение:	8 berths in 4 cabins	Вода:	1.500 Litres
Дизайнер:	Builder	Двигатели:	2 x 1950hp MTU
Водоизмещение:	76100 kg	Скорость:	29 Knots

3.390.000 € НДС уплачен



Двигатели:

2 x 1950hp MTU 12V 2000 M94

Часы наработки: 1000 aprox.

Скорость:

Максимальная: 29 knots aprox.

Вместимость:

Топливный бак: 9000 Litres

Бак пресной воды: 1500 Litres

Сточный бак: 435 Litres

Механическое оборудование:

Idromar MJ3 180L/h watermaker

Fuel capacity: 9000L

Fresh water capacity: 1500L

Black water capacity: 435L

Grey water capacity: 102L

Generator upgrade to 2 x Kohler 28kW

Night generator 1 x 12kW Fischer Panda with Super Silent capsule

Trac Star stabiliser system

Line voltage regulator

Digital bar chart display for fuel monitoring

Standby fresh water pump

Crestron wireless AV and lighting control system

Fuel conditioning system for engines (WFLC1500) and generators (WFLC500)

Two Victron Quattro inverters (24/200/8000 and 24/120/5000)

Two storage cage located in the engine room

Air conditioning upgraded to Tropical specification (3x water chilling units)

Ecomar 32 sewage treatment system

Wall brackets in the salon and complementary sockets

Sanitary pumps replacement in 220V and 24V with improvement of the water primary circuit

Reinforced Tecma solenoid valves

Laying of a washing system for the boat (3 water outlets)

40kW isolation transformer replacement Tri/Mono (instead of 20kW)

Installation of two electric fuel feeding pumps on Kohler generators

Bow and stern propellers - reinforcement with 40% more powerful hydraulic pumps

Sternthruster replacement - from 12inch to 16inch

Replacement of power cables

Wheelhouse airconditioning system replaced by a more powerful and silent system

Внутреннее оборудование:

Upgrade for aft cockpit with 4 speakers + 1 subwoofer

Upgrade for flybridge with 4 speakers

Upgrade for foredeck with 2x7" speakers

Crestron AV receiver/amplifier

Autonomic server (4 input/airplay streaming for each zone + Party mode)

Crestron 6+2 zone amplifier for exterior sound system + Bluray player for saloon, saloon TV upgraded to 55"

Powered blinds for the saloon and dining windows

Powered blinds in all guest cabins

Aft port double stateroom option including outboard 32" television on hinge down mechanism

Starboard main deck saloon bulwark balcony with sliding door

Safe - 2 brick - with digital lock in the aft port guest cabin

Safe - 2 brick - with digital lock in the aft starboard guest cabin

Safe - 2 brick - with digital lock in the forward VIP walk-in wardrobe



Safe – 2 brick – with digital lock in the master walk-in wardrobe
Safe – 2 brick – with digital lock in the stern crew mess
Additional safe in the captain's cabin
55" Samsung LED TV (including changes to AV unit) in the master stateroom
Apple iPad dock linked to the standard AV equipment
AV and lighting in master stateroom controlled via Crestron app
Apple iPod dock linked to the standard AV equipment in the aft starboard guest cabin, forward VIP stateroom
Interior wood finish Oak Satin Finish (Quarter Sawn Low Build) in lieu of standard
AV cabinet extended (to starboard) moving en-suite door further outboard, allowing for a 55" TV to be fitted on bulkhead in the master stateroom
Custom layout with berths positioned running longitudinally, headboard feature on aft bulkhead
TV re-positioned and en-suite door reduced in width in the aft starboard guest cabin
Key lock for main cabin door in the master stateroom
Main deck day head option
Two custom made coffee tables in saloon
Sliding pocket door (with opaque glass centre section) aft of the main deck day head (closing against the galley bulkhead) in the saloon and dining
Twin guest cabin option inboard berth moves outboard to create double berth
Luxurious mattress in all cabins (crew area included)
Additional furniture – salon, wheelhouse, cabins, bar
Centralized command control of all airconditioning systems
WC Tecma Silence Plus shower bidet in VIP and master cabins
Inox heated towel rail in all bathrooms (including crew area)
Frequency controller on airconditioning in the salon, galley and wheelhouse
Electric jack on crew door with remote control
Electric jack on stern safe
Sink with tap laying in all bathrooms
Inox frame on the big furniture in the living room
Fairlead reinforcement with 16mm inox plates
Stainless steel housing for the bar in the salon
Additional cupboard in the cubbyhole in front of the VIP cabin

Камбуз / Прачечное оборудование:

Sub Zero upright fridge with freezer drawers and additional fridge drawers
Zug oven and induction cooker replacement
Two larger food storage cupboards
Separate microwave oven and upgraded main oven
Sub Zero wine cooler in place of the larder storage cupboard in the galley
Drinkware – Strahl high quality Polycarbonate, unbreakable, dishwasher safe, consisting of 12x
Full size Miele dishwasher
Miele washing machine and dryer
Active carbon and dust anticalc filter

Навигационное оборудование:

Platinum Package
Fixed Engine Control Station
Raymarine GS165 – 4 x 16" Colour Touchscreen Chartplotter including remote
Navionics Full Mediterranean/Adriatics/Aegian map
Raystar 125 GPS Diff receiver
4kW 48" HD open array scanner in-lieu of standard on flybridge helm, in the main helm console & observation area
AIS Receive only integrated to Raymarine system
Raymarine autopilot system ST70+ colour display with keyboard dual station
Raymarine ST70+ colour speed and depth multifunctional display and keypad on the lower console and multifunctional repeater and keypad display on the flybridge



TRAC on/off switch for stabiliser system option for the flybridge console
Compass swinging and adjustment with correction card
Raymarine anemometer, sounder, fishfinder
Yacht Controller dual band 5 canals remote controller (engines and thrusters) and two joysticks
Centralized command control for all Raymarine systems

Оборудование палубы:

Hydraulic balcony on starboard side
Flybridge carbon fibre hardtop
Twin anchor arrangement
Electric BBQ grill on flybridge wetbar
Underwater lights – Small Xenon 60mm (50W) (8 lights = 4 across transom and 2 on either side)
Covers pack to cover all exterior seatings, tables, sun pads and flybridge wetbar, all in Sunbrella
Two Attwood Matrix helm seats upholstered in MBS Bright White Vinyl (399) with MBS Black Vinyl (361) piping in-lieu of the standard L-shaped seating (forward, starboard side) in the flybridge
Two folding leaf natural teak tables with 'V' groves between the planks, and a rounded profile nosing on flybridge
6 x Sunseeker natural teak directors chairs upholstered in Sunbrella Black 5408 in the aft cockpit
Natural teak deck with black caulking and composite capping rail in the foredeck and aft cockpit
Natural teak deck with black caulking on the flybridge and bathing platform
Single folding leaf natural teak table with 'V' groves between the planks, and a rounded profile nosing in the foredeck and cockpit
Special extended flybridge wet bar, increasing the length of the straight section between the raised shelf and the cool box
Square spa tub with upgraded waterfall front, lighting, water jets and balance tank with recirculating pump, upholstered bolster in Sunbrella and integrated sun pad all with profile to match the new style 28 metre flybridge mouldings
Winter cover on flybridge
4 gangway remote controls
Jacuzzi automatic discharge system with timeout
Two step Teflon protective treatment throughout the boat
Covers for Jacuzzi, windshield, flybridge
8mm Inox plates for stern cleats
Rainproof locking for the flybridge access
Stainless steel shelf on the two exterior fridges
Modification of liferaft shelf
Replacement of all sunbath/seats Sunbrella covers
Creation of a wind deflector in polished stainless steel, mirror and glass

Аварийно-спасательное оборудование:

Mobotix IP camera system (5 exterior, 3 interior)
Two 8 MAN liferaft canister in stainless steel basket on aft flybridge deck
Burglar alarm – superyacht system – sensors at all exterior access points with swipe type arming and disarming system in the saloon and dining, in the galley, in the main helm console & observation area, in the stern crew mess, in the engine compartment
Distress beacon
SART 56840 9Ghz
EPIRB device

Ремонт и техобслуживание:

COMPREHENSIVE REFIT 2016

Saloon AV System Upgrades

4x B&W Cinema7 in-ceiling speaker
2x B&W ISW3 Home Cinema subwoofer
B&W SA250 subwoofer amplifier



Crestron HDISPA 4K Ultra HD 7.1 Surround Sound AV receiver
IHAVE Network Movie Player
LG Allzone BluRay player
Apple TV 3rd generation
Crestron RMC3 AV automation rack
iPad mini 16GB as touchscreen controller + induction wall stand
Middleatlantic Slideout and rotating technical rack
Infosec E4pro2000 2000Va UPS with network card

Master Cabin AV System Upgrades

5x B&W M1 Home Cinema speakers
B&W AS608 Home Cinema subwoofer
Denon AVRX2200 4K Home Cinema amplifier
IHAVE Network Movie Player
LG Allzone BluRay Player
Apple TV 3rd generation
Crestron RMC3 AV automation rack
iPad Mini 16GB as touchscreen controller + induction table stand
Middleatlantic Slideout and rotating technical rack
Infosec E4pro1000 1000Va UPS with network card

Cockpit AV System Upgrades

Crestron C2NIAMP6X100 Multiroom audio system
Fusion MSSW10 10" Marine Grade subwoofer
Fusion amplifier for 10" Marine Grade subwoofer

Flybridge AV System Upgrade

Crestron C2NIAMP6X100 Multiroom audio system

Foredeck AV System Upgrades

Crestron C2NIAMP6X100 Multiroom audio system
Two Sonance VP65RXT waterproof speakers

AV Technical Rack

BNM 14SR 14TB Video Server (stores up to 280 Bluray, 1850 DVD, 18500 CD)
Autonomic MMS5A 5 zones Audio Server (independent audio source for each zone / Party mode)

Network System Upgrades

Netmodule 3G4G router WLAN 2xWAN + 1 modem 4G (2x slots for SIM) + 1 WLAN access point
Zyxel 4x access points a/c dual band, 2.4 and 5 Ghz
Dlink Switch Smartpro, 24 ports, Giga POE + 4 SFP Niv2 PoE 802.3
Two Dlink Switch 8 ports Giga (saloon and master)
Legrand 24 ports network patch

SAT TV System Upgrades

KVH Tracvision TV8, PIRE: 4344 dbW, 1830V, 4A, Universal LNB, automatic skew, TV hub control unit
Infosec 1000vA UPS with network card
IHAVE Multiswitch 512

Lighting System Upgrades

Crestron DINAP3 light management automation rack
2x Crestron DINHUB DIN rail distribution hub
3x Crestron DIN PWS50 DIN rail 50W Crestnet power supply
8x Crestron CHLEDPWM3D5 3 channel LED control module
5x Crestron DIN8SW8 DIN rail high voltage switch
5x Crestron C2N UNI8IO Universal keypad interface



16x IHAVE charge compensator

CCTV System Upgrades

4x Mobotix Q25 Panoramic 360 Exterior 6 Megapixel camera

5x Mobotix S15 6 Megapixel 180 degree Fisheye camera

Synology SYNDS215+ NAS Server 2 bays 8 TB total

Upholstery Refit

All in Sunbrella fabric

Jacuzzi surround

Flybridge U-seating

4x Flybridge helm seats

Cockpit U-seating

Foredeck sunbathing area

Foredeck aft facing seating

Foredeck U-seating

18x New loose cushions for exterior areas

Cockpit mesh privacy screens (1 aft + 2 sides) with black zip covers

Mesh sun screen fully covering saloon starboard side

Other Upgrades

2x Main helm + 2x flybridge helm chart plotter upgrade to GS series 16" touchscreen

50/200 kHz Fishfinder Transducer

Navionics Platinum Map

AIS

Jacuzzi surrounding removed to accommodate seating/chaiselongues

Dummy dome to complete KVH TV8

Raymarine A series chart plotter in crew area

Raymarine multifunction display in Captain's cabin

Night generator installation (Fischer Panda 12kW in supersilent cabin and silent mounts)

Victron Quattro 24/200/8000W inverter/charger with power control, power assist, and generator start/stop feature

Upgraded black tank sensor (compatible with NMEA2000 Protocol)

Saloon and wheelhouse converted to Walnut parquet floor

Saloon starboard side center cabinet lowered to match other cabinet levels

LED light installation in saloon center furniture cabinet

New carpets installed in master cabin, starboard guest, port guest, VIP, wheelhouse seating, companionways, crew area

New carpet to match ceiling shape in saloon

Flybridge Jacuzzi GRP surround removed for increased usage and view

Comprehensive teak maintenance

Extra washer/dryer combi installation in lower deck VIP lobby area + laundry storage cabinet addition

Glassware storage area addition in saloon

28 piece mirror addition in saloon and master stateroom

40m stainless steel chain addition to starboard windlass reaching total of 120m

Drive shaft cutlass bearings replaced

Fluorescent color application to stabilizer fins for higher visibility and safety

Minor gelcoat repairs in various areas

Addition of wooden shelf and full size mirror in day head

Exterior carbon fiber beauty lines (hull, cockpit, superstructure)

Hardtop carbon fiber vinyl protection

Extra insulation for main engines exhaust discharge pipes to reduce heat dissipation in engine room

Dokensip Premium monitoring package (to remotely monitor motion, battery voltage, shore power voltage, bilge water level via Dokensip app)

[Комментарии брокера:](#)



Daring and dramatic this **Sunseeker 28M Yacht** built in 2012, delivered in 2013 and refitted in 2016 will not only thrill, but also inspire. Spacious, elegant and practical, the interior is superbly attractive and benefits from exquisite craftsmanship and cutting-edge design. Wrap-around glazing and full height windows give you undisrupted panoramic views through a drop-down saloon balcony, while the dining area benefits from ultra-modern surroundings and clever use of space. On the foredeck, large sun-pads and comfortable seating areas are perfect for a little al-fresco dining. Alternatively, head to the flybridge and enjoy a glass of something cold while cruising along the coastline. True to Sunseeker heritage, this 4-cabin version masterpiece of design has been styled to perfection including crew accommodation for 4 with their own separate access. Loaded with lots of optional extras including Sunseeker's Platinum Upgrade Package, larger generators, zero speed stabilisers and Jacuzzi, this privately owned Sunseeker 28 Metre Yacht is undoubtedly a must-see!

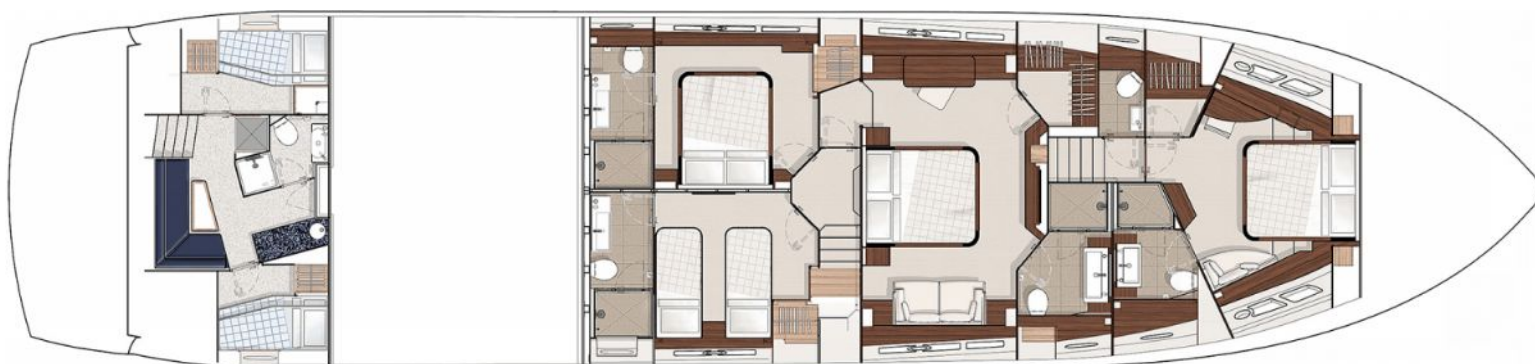
Местонахождение:

Spain





Схема яхты



Все представленные выше данные основаны на информации, предоставленной продавцами. Данная информация считается достоверной, однако мы не несем ответственности за ее точность. Потенциальному покупателю настоятельно рекомендуется самостоятельно проверить предоставленную информацию и воспользоваться услугами квалифицированного морского эксперта и / или произвести проверку двигателей. В том случае, если проверка двигателей будет произведена нашей компанией, это не влечет никакой ответственности с нашей стороны.