



Dolphin Yachts

INTERNATIONAL YACHT BROKERS

Dolphin Yachts S.L.

Club de Mar

07015 Palma de Mallorca

Spain

info@dolphin-yachts.com



Cheoy Lee 55

Builder:	Cheoy Lee	LOA:	16.76m (55'0")
Model:	55	Beam:	5.06m (16'6")
Year:	1980	Draft:	1.65m (5'4")
Construction:	GRP	Fuel:	9.460 Litres
Accommodation:	6 berths in 3 cabins	Water:	1.700 Litres
Designer:	Charles Wittholz	Engines:	2 x 210hp Caterpillar
Displacement:	36.288 kg	Speed:	12 Knots

£245,950 VAT exempt



ENGINE:

2 x 210hp Caterpillar 3208 V8 Diesels

Engine Hours: 2000 aprox.

SPEED:

Top: 12 knots aprox.

Cruise: 9 knots aprox.

CAPACITIES:

Fuel: 9460 Litres

Water: 1700 Litres

Holding: Yes

MECHANICAL EQUIPMENT:

Stabilisers Vosper mini fin with oil cooler and Dowty constant velocity hydraulic pumps (overhauled 2007)

Stainless steel shafts and bronze propellers

Six Racor fuel filters

220-240V AC supplied from shore power line or diesel generators

Phillippi 50 Amp switch mode battery charger/shore support system

Two 24V Sterling switch mode battery chargers for bowthruster batteries

12V Sterling switch mode charger for engine start batteries

240V 12 & 48V control panel & breakers in main distribution panel in engine room with supplementary panels elsewhere in vessel

Two Raritan 240V hot water heaters/calorifiers

240V water pressure pump

12V water pressure pump

12V deckwash/fire pump

Four automatic bilge pumps

Double action Whale pump and manifold to all bilges

Black water 570ltr

Grey water 570ltr

Oil fired radiator type central heating system

Machinery and engine room detailed description

Non skid aluminum cheque plate sole, twin Caterpillar 3208 V8 normally aspirated Diesels giving 210hp at 2,500 rpm, fresh water cooled with twin disc reduction gears and standard alternators. Onan 6kW generator behind sound shield, Onan 12kW generator behind sound shield, Onan water cooled silencers to both units. Racor filters to each generator and main engine with spare unit to each engine, engine room ventilation blowers, automatic fire suppression system, two Raritan 240V water heaters, Clarke 240V 1hp fresh water pressure pump with accumulator tank and pressure gauge. 12V fresh water pressure system with accumulator tank and pressure gauge. Sea chest with electrically bonded valves for sea water cooling supplies to engines and generators. Fuel management system consisting of fuel shut off valves and fuel transfer system. Fire resistant GFRP wing fuel tanks each with two access manholes for cleaning and inspection. Underfloor day running tank with separate deck filler enabling tax free fuel to be used for generators and heating in various countries. Normally filled from wing tanks when day running. Two 110ah batteries for generator starting, two 110ah batteries for engine starting, two 110ah batteries used for domestics. Charging via main engine alternators via smart charger unit or dedicated 240V switch mode units. Four 150ah batteries forming 48V bank for sidepower bowthruster, with dedicated charging. All batteries in GFRP boxes. Battery selector switches for engines, generators and thruster. Domestic battery condition indicator on main panel with repeater in galley. Electrical control panel with 240V control breakers amp hour meters and board voltage. 12V breakers and battery management switches. Safety rail around engines, CCTV camera to pilothouse. Work bench with tool cabinet and tool rack above, small vice, 240V fluorescent lighting, 12V fluorescent emergency lighting, telephone to pilothouse.



GENERATORS:

12kW and 6kW Diesel Onan 240V

ACCOMMODATION:

Berths: 6

Cabins: 3

Head: 3

Crew Berths: 3

Crew Cabins: 1

Aft stateroom and bathroom extend the full width of the vessel and forward for over 13 feet. Central queen size berth with storage under, two night lockers, two bed head reading lights, large double wardrobe electrically heated, writing desk with upholstered stool, ships telephone settee, six opening ports, shower, tiled countertop with hand basin, ITT electric w/c, exhaust fan, opening port. Smoke alarm and air conditioning unit.

Forward guest stateroom with V-berth which can form a commodious double when cushion infill used, drawers under, two lockers on forward bulkhead, wardrobe to port with escape hatch to forward deck over. Two reading lights, four opening ports, fluorescent ceiling light, smoke alarm, ships telephone, shower/head shared with starboard stateroom with lockable communicating door.

Starboard guest stateroom with double berth, drawer storage under, two reading lights on berth head, book storage area, telephone to pilothouse, wardrobe with drawer, door to shower/head shared with forward V stateroom. Fluorescent ceiling light and smoke alarm, telephone.

Midship crew/children cabin with two large single bunk berths, individual reading lights, two opening ports, telephone, double wardrobe, door to midship head/shower with manual ITT w/c.

Main saloon is accessed from the main deck through double sliding doors from the aft deck or a sliding door from the starboard deck. The decor is satin finished teakwood with cream leather reclining armchairs and a reclining matching settee. Drapes have a blue theme as does the central Chinese carpet. Overhead lighting is a mixture of highly energy efficient LED recessed units, central fluorescent/halogen units all independently switched, air conditioning unit to starboard, the valance lighting over the drapes is by hidden rope light. An Alpine stereo VHF and CD player is fitted as is a 32" LCD TV unit. Four 240V outlets, cocktail cabinet and drink storage, bookcase etc., staircase aft to master stateroom and staircase forward to engine room and accommodation lower deck. Smoke alarm.

Pilothouse can be accessed from either side deck or the saloon. The helm is central and has a truly commanding view, comprehensive instrumentation, a five camera CCTV system for close quarters maneuvering, a separate navigators station to port with chart stowage in drawer beneath. To rear of the house is another chart table with seating either side which can form a pilot berth. Overhead and floor red lighting, plus normal white light, 240V duplex sockets and 12V plug in socket for mobiles etc., telephone.

Companionway serving all lower forward deck, with fluorescent lighting, air conditioning unit, smoke alarm, fire extinguisher and carbon monoxide alarm.

HEATING:

Oil fired radiator type (2009)

AIR CONDITIONING:

Yes

GALLEY/LAUNDRY:

New galley (2007) with solid teak cupboards and all new appliances

Wallis stainless steel fan assisted diesel fired wall oven



240V microwave (inverter powered)
240V fridge (inverter powered)
Wallis ceramic hob (diesel powered)
Bosch dishwasher
Small custom built deep freeze 12V
Filtered drinking water tap
Electric extractor in stainless hood
Considerable storage beneath solid Iroka worktops
Domestic battery state indicator
12V plug for mobiles etc.
240V automatic washing machine with 240V drier vented overboard

NAVIGATION:

Decca compass on bridge
Sestrel magnetic compass on flybridge
Autohelm 7000 automatic pilot with dual controls
Sailor VHF
Nasa DSC VHF on flybridge with dedicated GPS and emergency power supply independent of ship DC supply
Nasa DSC VHF in wheelhouse linked to Garmin GPS
Nasa weather fax
Navtex
Depth indicator
Speed log
Wind speed indicator
Raytheon fish finder
Garmin 328 GPS
Closed scan Raytheon radar with chart plotter
Yeoman chart plotter linked to Garmin GPS
Loud hailer with automatic fog warning
Fiamma compressor driven air horns

DECK:

Neco 240V anchor windlass with chain cathead and rope capstan, with remote control
50,8kg galvanised Bruce anchor with 34kg Admiralty pattern kedge
40 fathoms 7/16th galvanised chain with bow roller and chafing gear
Six stainless steel bollards
1-1/4 stainless pulpit/bow rail
Fiberglass bulwarks with teak capping rail
12V LED lights over deck passageways
Storage lockers forward of wheelhouse
Bow seat
Boarding gates port starboard and aft
Passerelle
Warps
Fenders
Boat hooks
Navigation lights
400kg electrically operated boom derrick on boat deck
Hydraulic mast lowering equipment
Jeckells steadying sail (new 2006, and as yet unused)
Teak grating swim platform mounted on transom & accessed from the main deck by a stainless steel ladder
Enclosed canopy to fit the fly bridge (2009)
Bimini (2009)
Aft canopy (2009)



Winter covers

Flybridge detailed description

Flybridge is accessed from the pilothouse, and covers approximately 2/3rds of the vessel. Engine starts and controls duplicated from wheelhouse as is GPS and autopilot, dedicated VHF, radar chart plotter station, custom stainless wheel, central helm seat with large seating/lounging area to starboard. The air conditioning unit is mounted aft of the seating area alongside a portable gas powered barbecue. There is a centrally mounted funnel which is now used for storage and the mounting for the mast which can be easily lowered by one person thanks to the magic of hydraulic power. The owner stores his small sailing dinghy and speed boat aft which still leaves a considerable space for sunbathing.

SAFETY:

Fire extinguishers (2007)

Eight person automatically inflated life raft

Offshore pack flares

Continuous safety rail around decks

TENDERS/TOYS:

Zodiac 420 RIB with 35hp Mercury outboard and wheel steering

SERVICE HISTORY AND CONSTRUCTION:

2003: refitted comprehensively including a new Sleipner sidepower 16hp 48V bowthruster, the below water equipment overhauled

2005: full osmosis treatment

2007: saloon refitted and refurnished, both the forward and aft staterooms refitted, new galley fitted at a cost of £8,500

Moulded GFRP hull, decks, pilothouse, stateroom sides and flybridge to Lloyds 100A1

Epoxy barrier coat below waterline with epoxy copper antifouling for greater protection and longevity

BROKERS COMMENTS:

**** **JUST REDUCED!** ****

Cheoy Lee are one of the world's great yacht builders and known for quality and integrity. Charles Wittholtz designed the hull of this **Cheoy Lee 55** on the lines of a north Pacific Salmon Fisherman and sister vessels have made voyages of considerable length. She is well designed, strong and is a low maintenance yacht which has enjoyed a regime of continuous planned refit with her current owner and is in first class order throughout - supplied with her past ten years maintenance records, lists of major equipment, serial numbers, handbooks and manufacture contact details. Originally built and fitted out to Lloyds 100A1 she has extensive tank capacity and transatlantic range. This vessel is an extremely comfortable *little ship*, you could live aboard permanently just as well as in a house ashore.

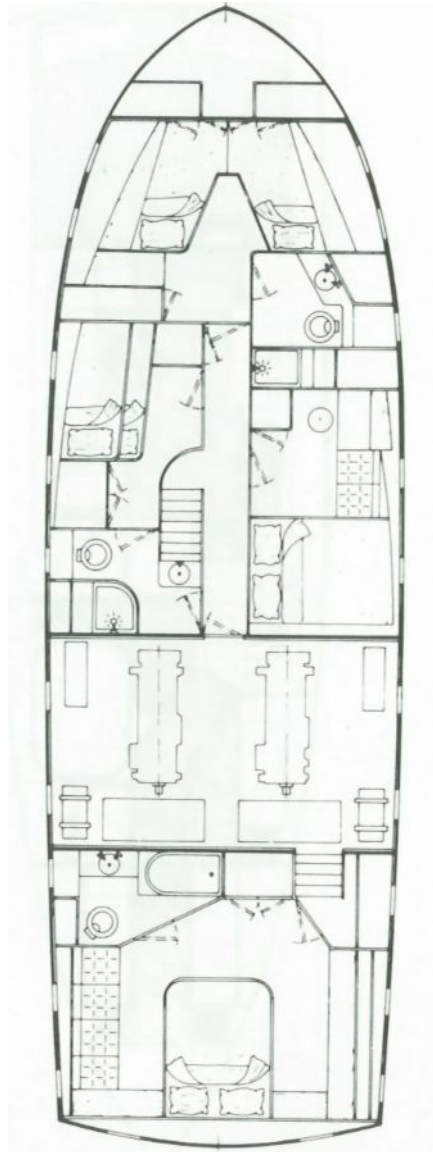
LYING:

UK





Layout Plans



The particulars presented in this brochure are based on information provided by the sellers and are believed to be correct, although we cannot be liable for any inaccuracy. A prospective buyer is strongly advised to check these particulars and where appropriate and at his own expense to employ a qualified marine surveyor and / or have an engine trial conducted which if conducted by us shall not imply any liability on our part.