



Dolphin Yachts
INTERNATIONAL YACHT BROKERS

Dolphin Yachts S.L.

Club de Mar

07015 Palma de Mallorca

Spain

info@dolphin-yachts.com



Trader 535 Signature

Hersteller:	Trader	LüA:	17.00m (55'8")
Modell:	535 Signature	Breite:	4.68m (15'4")
Jahr:	2000	Tiefgang:	1.50m (4'9")
Rumpfmateri al:	GFK/Fiberglas	Treibstoff:	2.270 Litres
Räumlichkeiten:	7 berths in 3 cabins	Wasser:	909 Litres
		Motoren:	2 x 430hp Caterpillar
Verdrängung:	23900 kg		

295.000 € MwSt bezahlt



MOTOREN:

2 x 430hp Caterpillar
Motorstunden: 560 aprox.

FASSUNGSVERMÖGEN:

Treibstoff: 2270 Litres
Wasser: 909 Litres
Abwasser: 75

MECHANISCHE AUSRÜSTUNG:

Generator - Onan 13.50kv (690hrs)
Bow thruster
Watermaker
Battery charger
Start and domestic batteries
12VDC/24VDC/220VAC electrical systems
Shore power inlet
Automatic, electric and manual bilge pumps

RÄUMLICHKEITEN:

Berths: 7
Cabins: 3
Head: 2
Crew Berths: 0
Crew Cabins: 0

Spacious Master Stateroom aft with island double bed, ensuite bathroom with electric WC, hand basin and separate shower
Double VIP Stateroom forward with ensuite bathroom fitted with electric WC, hand basin and shower
Port Guest cabin with three berths
She was an ex boat show boat so has full marble surfaces in all the bathrooms and galley

INNENAUSSTATTUNG:

Hand crafted teak joinery with raised mouldings
Teak laid floor with contrasting holly splines
Tracmaster satellite tv system.
TV
DVD player
Reverse cycle air conditioning/heating

KOMBÜSE/WASCHKÜCHE:

Fresh water filtration system
Refrigerator and freezer - Waeco
Microwave oven - Panasonic Combi
Electric Oven
Vitroceramic 4 burner hob
Washer/dryer
Dishwasher - Zanussi
Double stainless steel sinks

NAVIGATION:

Interior helm station:

2 x Cetrek C-net 2000 Multi
Cetrek 730 autopilot display



Furuno FRS-1000 Radar
ICS Nav4 Navtex NMEA weather fax
Shipmate RS8400 VHF
Compass

Flybridge helm station:

Cetrek C-net 2000 Multi
Cetrek 730 autopilot display
Furuno FRS-1000 Radar
Compass

DECK:

Electric anchor windlass - Lofrans 1200w
Hydraulic passerelle
Round cockpit table with foldable chairs
Teak side decks and cockpit
Cockpit shower
Swimming ladder
CQR anchor with 50m of chain
Bathing platform
Boarding ladder
Bimini top on Flybridge
Rigid roof on cockpit
Cockpit rollable windows both side and aft
Cover for windscreen
Sun cushions
Cockpit table and seats
Flybridge:
Seats and sun cushions
Exterior fridge
Covers for aft deck and flybridge (2020)

ANMERKUNGEN DES MAKLERS:

Trader 535 yachts make excellent safe cruising motor yachts thanks to their design and construction providing spacious and comfortable living spaces for all on board. Second owner from new and never chartered hence her very low engine hours and beautiful condition. Her salon was extensively and tastefully refurbished a few years ago and extensive changes were made on the aft deck with a custom-built table, cooking facilities and BBQ this making it the ultimate entertaining area. She has been maintained to a high standard by professional crew and is available for viewing in Mallorca.

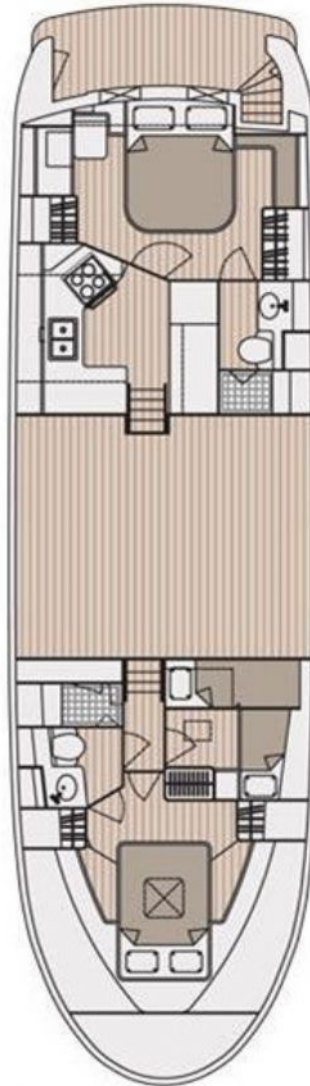
STANDORT:

Spain





Grundriss



Die Angaben in dieser Beschreibung werden als korrekt angenommen, ihre Exaktheit ist jedoch weder garantiert noch können sie als Vertragsbestandteil genutzt werden. Ein unabhängiges Gutachten ist immer empfehlenswert. Dieses Schiff wird angeboten unter Vorbehalt von Zwischenverkauf, Preisänderung oder Angebotsrücktritt ohne Mitteilung.