



Dolphin Yachts

INTERNATIONAL YACHT BROKERS

Dolphin Yachts S.L.

Club de Mar

07015 Palma de Mallorca

Spain

info@dolphin-yachts.com



Jongert 2900 S

Hersteller:	Jongert	LüA:	29.50m (96'8")
Modell:	2900 S	Breite:	6.70m (22'0")
Jahr:	1991	Tiefgang:	4.20m (13'8")
Rumpfmateriail:	Stahl/Alum	Treibstoff:	8.000 Litres
Räumlichkeiten:	7 berths in 3 cabins	Wasser:	3.000 Litres
Designer:	Peter Sijm	Motoren:	1 x 299hp Mercedes MTU
Verdrängung:	103 tons	Keel:	Fin

990.000 € MwSt bezahlt



MOTOREN:

1 x 299hp Mercedes MTU OM 423 V10

Motorstunden: 10000 aprox.

GESCHWINDIGKEIT:

12 knots aprox.

FASSUNGSVERMÖGEN:

Treibstoff: 8000 Litres

Wasser: 3000 Litres

Abwasser: 2150

MECHANISCHE AUSTRÜSTUNG:

Generators: MTU (2011)

Generator power: 62 kW / 84 hp

Generator: 2 type ONAN (2011)

Generator: 2 power 24 kW / 33 hp

Gearbox: TWINDISK 2.44;1

Bow thruster: HYDROMAR / 45 hp (33,3 kW) retractable and turn able

Water maker: HEM 25 high capacity water maker (4,500l/day) and HEINEN & HOPMAN hot water system

Fuel separator: 6 x RACOR filters

Air-conditioning: CLIMMA reverse cycle aircon (2011)

Waste water treatment: HAMANN

Voltage: 380 V / 220 V

Shore power converter: 380V/60A, 3-phase, 50 hz

Inverter: 3 x MASTERVOLT 24/1800 + ATLAS 24/3kW 220 V (2011)

Batteries: 2 x SONNENSCHNEID 1000 Amp batteries

RÄUMLICHKEITEN:

Berths: 7

Cabins: 3

Head: 3

Crew Berths: 4

Crew Cabins: 2

The notably spacious open cockpit and closed deck salon offer unrestricted views over the length of the yacht. One of the most popular places on board for to stay and enjoy unrivalled cruising pleasures and evening entertaining

The enclosed deck salon features a comfortable seating area with a panoramic view. The design is exclusive but functional, the woodwork is flawless. A second steering position is found here, too, with first-class navigation and communication equipment



Master Stateroom

The elegant owner's suite is warm and inviting, with maple wood paneling and a private bathroom with bath and shower.

Guest Stateroom

The two guest cabins are light and airy, each with their own bathroom and an extra Pullman berth if required.

Crew Accommodation

Forward, with a separate entrance on deck, are two en-suite crew cabins, as well as a laundry room, a dinette and a professionally equipped galley.

INNENAUSSTATTUNG:

TV/ DVD: SONY

Music system: SONY

HEIZUNG:

Diesel

KLIMAAANLAGE:

Reverse Cycle

KOMBÜSE/WASCHKÜCHE:

Refrigerator: 5 x TADEMA 400 l + 180 l

Freezer: 3 (1 x new 2010) TADEMA 360 l + 60 l

Oven: PANASONIC

Stove: MIELE

Microwave: PANASONIC

Icemaker: U LINE

Dishwasher: MIELE

Washing machine: MIELE

Dryer: MIELE

NAVIGATION:

Magnetic compass: B & G Fluxgate compass, SESTREL magnetic compass

Gyro compass: FURUNO GY 700

Log: B & G HYDRA 330

Depth sounder: B & G HYDRA 330

Autopilot: SEGATRON



Radar: FURUNO FR 1510 D, SIMRAD AP50

Electronic chart system: FURUNO GP 32

GPS: FURUNO GP 32

Instrumentation system

(wind speed & direction): B & G HYDRA 330

COMMUNICATION AND SATELLITE EQUIPMENT

Navtex: FURUNO NX 700

Broadband Internet FLEET 3/UMTS/WIFI Yachtspot

GSM: ERICSSON

SSB radio: SKANTI SSB 800 W

VHF: SKANTI

Mini M

Telephone exchange: KVH TRACPHONE 50

VHF handheld radio

Printer / fax: PANASONIC

DECK:

Anchors & chain: 1 x CQR 300lbs anchor & 120 m chain 16 mm, 2 x 100 lbs anchor

Windlass: LEWMAR 6000

Passarelle: Folding: MULTIPLEX

Bathing ladder: 1 on platform, 1 on the side

Bimini top: Full sun awning, permanent Bimini over cockpit

SPIEREN, RUNDHÖLZER & SEGEL:

Rig: NAVTEC Rod Rigging Masts: NIRVANA Aluminum Boom/s: Hydraulic boom Vang Spinnaker boom: Carbon Jockey Pole Reefing system: Hydraulic rolling reefing Sails by: Doyle and North Sails Foresails: 228 sqm Genoa (2012) Mainsails: 175 sqm (2012) Stay: 79 sqm Winches: LEWMAR hydraulic and manual

BEIBOOTE/SPIELZEUG:

Tenders: ZODIAC tender 2012, MERCURY 15 hp 4s
2012 and TOHATSU 10 hp 2 s

Toys: LASER sailing boat, kayak, folding bicycles

Dive equipment: Bauer Dive Compressor

ANMERKUNGEN DES MAKLERS:



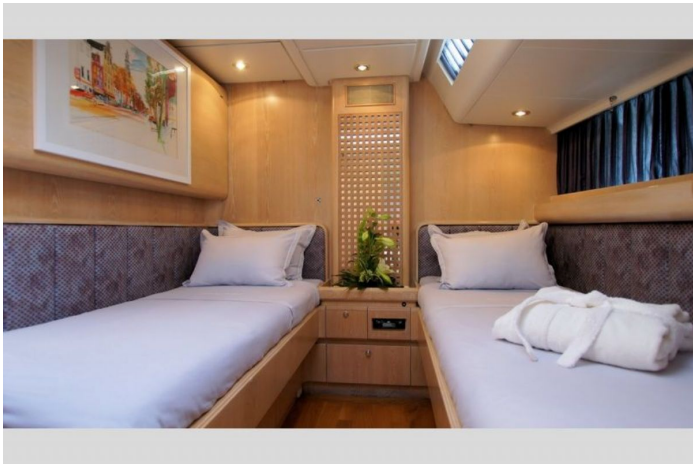
Strength, highest quality and performance make the Jongert 2900 series still one of the best yachts in the 30m range to go around the world.

Strong and reliable, this stylish performance Jongert 2900 has completed an Arctic and Antarctic circumnavigation. Overhauled in 2011 and 2015 - hull, superstructure, mast, boom and spinnaker-pole re-painted, interior varnished. Main engine, generator, bow thruster, steering, mast, furlers, hydraulics, aircon, appliances, and deck equipment completely serviced or replaced.

Stowaway mast, hydraulic furling system, hydraulic Lewmar winches all make her easy to handle by a small crew. Amazing Opportunity!!

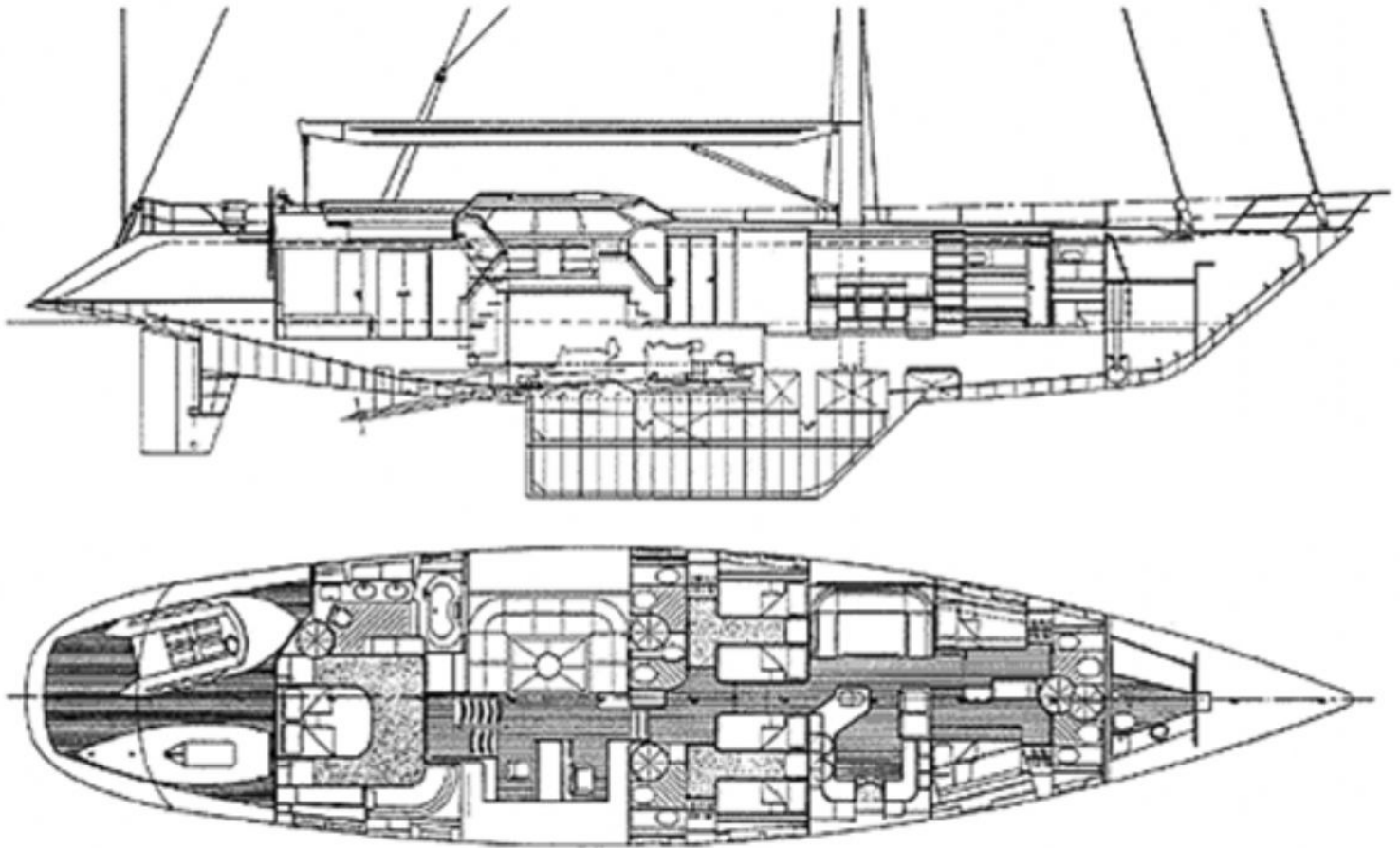
STANDORT:

Spain





Grundriss



Die Angaben in dieser Beschreibung werden als korrekt angenommen, ihre Exaktheit ist jedoch weder garantiert noch können sie als Vertragsbestandteil genutzt werden. Ein unabhängiges Gutachten ist immer empfehlenswert. Dieses Schiff wird angeboten unter Vorbehalt von Zwischenverkauf, Preisänderung oder Angebotsrücktritt ohne Mitteilung.