



# Dolphin Yachts

INTERNATIONAL YACHT BROKERS

Dolphin Yachts S.L.

Club de Mar

07015 Palma de Mallorca

Spain

info@dolphin-yachts.com

---



## Jongert 2900 S

Constructor:	Jongert	Eslora total:	29.50m (96'8")
Modelo:	2900 S	Manga:	6.70m (22'0")
Año:	1991	Calado:	4.20m (13'8")
Material:	Acero/Alum	Combustible:	8.000 Litres
Distribución:	7 berths in 3 cabins	Agua:	3.000 Litres
Arquitecto:	Peter Sijm	Motores:	1 x 299hp Mercedes MTU
Desplazamiento:	103 tons	Quilla:	Fin

990.000 € EU IVA pagado



#### MOTORES:

1 x 299hp Mercedes MTU OM 423 V10

Horas Motor: 10000 aprox.

#### VELOCIDAD:

12 knots aprox.

#### CAPACIDADES:

Combustible: 8000 Litres

Agua: 3000 Litres

Aqua negras / grises: 2150

#### EQUIPO MECÁNICO:

Generators: MTU (2011)

Generator power: 62 kW / 84 hp

Generator: 2 type ONAN (2011)

Generator: 2 power 24 kW / 33 hp

Gearbox: TWINDISK 2.44;1

Bow thruster: HYDROMAR / 45 hp (33,3 kW) retractable and turn able

Water maker: HEM 25 high capacity water maker (4,500l/day) and HEINEN & HOPMAN hot water system

Fuel separator: 6 x RACOR filters

Air-conditioning: CLIMMA reverse cycle aircon (2011)

Waste water treatment: HAMANN

Voltage: 380 V / 220 V

Shore power converter: 380V/60A, 3-phase, 50 hz

Inverter: 3 x MASTERVOLT 24/1800 + ATLAS 24/3kW 220 V (2011)

Batteries: 2 x SONNENSCHNEIN 1000 Amp batteries

#### DISTRIBUCIÓN:

Berths: 7

Cabins: 3

Head: 3

Crew Berths: 4

Crew Cabins: 2

The notably spacious open cockpit and closed deck salon offer unrestricted views over the length of the yacht. One of the most popular places on board for to stay and enjoy unrivalled cruising pleasures and evening entertaining

The enclosed deck salon features a comfortable seating area with a panoramic view. The design is exclusive but functional, the woodwork is flawless. A second steering position is found here, too, with first-class navigation and communication equipment



#### Master Stateroom

The elegant owner's suite is warm and inviting, with maple wood paneling and a private bathroom with bath and shower.

#### Guest Stateroom

The two guest cabins are light and airy, each with their own bathroom and an extra Pullman berth if required.

#### Crew Accommodation

Forward, with a separate entrance on deck, are two en-suite crew cabins, as well as a laundry room, a dinette and a professionally equipped galley.

#### EQUIPO DE INTERIORES:

TV/ DVD: SONY

Music system: SONY

#### CALEFACCIÓN:

Diesel

#### AIRE ACONDICIONADO:

Reverse Cycle

#### COCINA/LAVANDERÍA:

Refrigerator: 5 x TADEMA 400 I + 180 I

Freezer: 3 (1 x new 2010) TADEMA 360 I + 60 I

Oven: PANASONIC

Stove: MIELE

Microwave: PANASONIC

Icemaker: U LINE

Dishwasher: MIELE

Washing machine: MIELE

Dryer: MIELE

#### NAVEGACIÓN:

Magnetic compass: B & G Fluxgate compass, SESTREL magnetic compass

Gyro compass: FURUNO GY 700

Log: B & G HYDRA 330

Depth sounder: B & G HYDRA 330

Autopilot: SEGATRON



Radar: FURUNO FR 1510 D, SIMRAD AP50

Electronic chart system: FURUNO GP 32

GPS: FURUNO GP 32

Instrumentation system

(wind speed & direction): B & G HYDRA 330

COMMUNICATION AND SATELLITE EQUIPMENT

Navtex: FURUNO NX 700

Broadband Internet FLEET 3/UMTS/WIFI Yachtspot

GSM: ERICSSON

SSB radio: SKANTI SSB 800 W

VHF: SKANTI

Mini M

Telephone exchange: KVH TRACPHONE 50

VHF handheld radio

Printer / fax: PANASONIC

**EQUIPO DE CUBIERTA:**

Anchors & chain: 1 x CQR 300lbs anchor & 120 m chain 16 mm, 2 x 100 lbs anchor

Windlass: LEWMAR 6000

Passarelle: Folding: MULTIPLEX

Bathing ladder: 1 on platform, 1 on the side

Bimini top: Full sun awning, permanent Bimini over cockpit

**JARCIA Y VELAS:**

Rig: NAVTEC Rod Rigging Masts: NIRVANA Aluminum Boom/s: Hydraulic boom Vang Spinnaker boom: Carbon Jockey Pole Reefing system: Hydraulic rolling reefing Sails by: Doyle and North Sails Foresails: 228 sqm Genoa (2012) Mainsails: 175 sqm (2012) Stay: 79 sqm Winches: LEWMAR hydraulic and manual

**ANEXOS/JUGUETES:**

Tenders: ZODIAC tender 2012, MERCURY 15 hp 4s 2012 and TOHATSU 10 hp 2 s

Toys: LASER sailing boat, kayak, folding bicycles

Dive equipment: Bauer Dive Compressor

**COMENTARIO DEL AGENTE:**



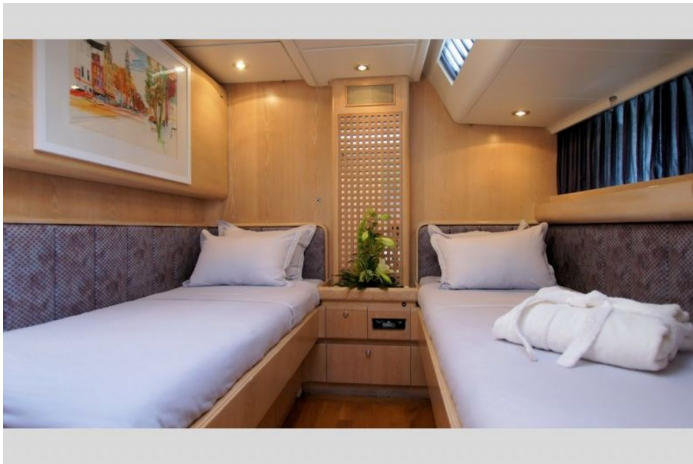
Strength, highest quality and performance make the Jongert 2900 series still one of the best yachts in the 30m range to go around the world.

Strong and reliable, this stylish performance Jongert 2900 has completed an Arctic and Antarctic circumnavigation. Overhauled in 2011 and 2015 - hull, superstructure, mast, boom and spinnaker-pole re-painted, interior varnished. Main engine, generator, bow thruster, steering, mast, furlers, hydraulics, aircon, appliances, and deck equipment completely serviced or replaced.

Stowaway mast, hydraulic furling system, hydraulic Lewmar winches all make her easy to handle by a small crew. Amazing Opportunity!!

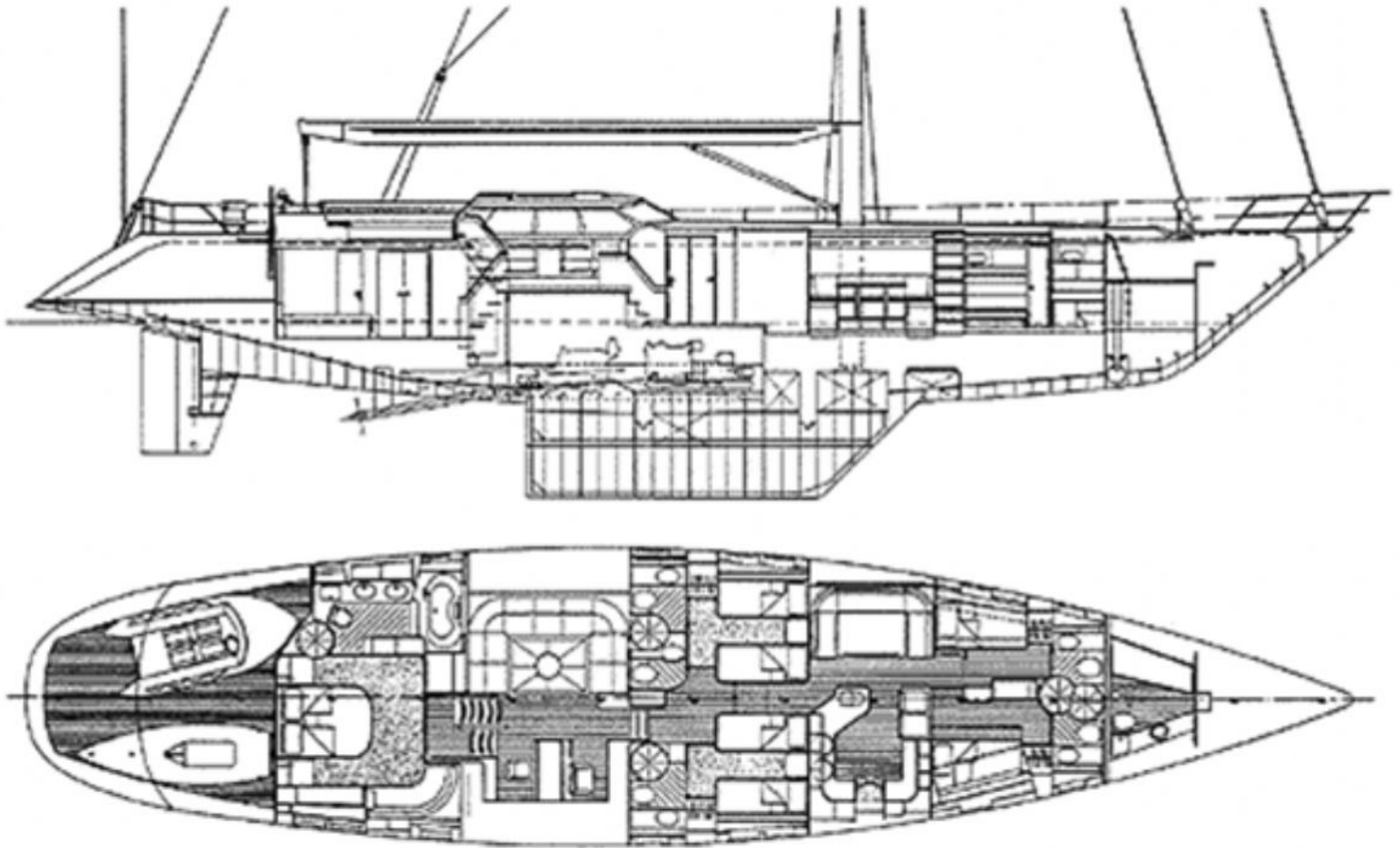
## LUGAR:

Spain





## Plan de la distribución



Las informaciones presentados en esta descripción son probablemente correctas pero su exactitud no esta garantizada y no podrán ser utilizados contractualmente. Una peritación independiente es siempre recomendable. Este barco puede ser retirado de la venta sin previo aviso.