



Dolphin Yachts

INTERNATIONAL YACHT BROKERS

Dolphin Yachts S.L.

Club de Mar

07015 Palma de Mallorca

Spain

info@dolphin-yachts.com



Rupelmonde Converted Tug

Builder:	Rupelmonde	LOA:	25.50m (83'7")
Model:	Converted Tug	Beam:	5.10m (16'7")
Year:	1939	Draft:	2.65m (8'7")
Construction:	Steel	Fuel:	5.700 Litres
Accommodation:	7 berths in 4 cabins	Water:	700 Litres
Designer:	Builder	Engines:	1 x 490hp Iveco
Displacement:	110 tonnes	Speed:	12 Knots

395.000 € EU VAT paid



ENGINE:

1 x 490hp Iveco C13ENTM5010

Engine Hours: 750 aprox.

SPEED:

Top: 12 knots aprox.

Cruise: 9 knots aprox.

CAPACITIES:

Fuel: 5700 Litres

Water: 700 Litres

MECHANICAL EQUIPMENT:

Iveco ME C13ENTM5010 (2007) 490 CV. 6 cylinders. Speed (estimated max speed of yacht) 12 knots.

Engine hours (hours) : 750 H (consumption at 8/9 knots: 35 liters)

Generator: Vetus diesel VH4. 27 KWA (2800h) (2007)

Selmar Watermaker: 125 liters / hour.

Battery Charger

ACCOMMODATION:

Berths: 7

Cabins: 4

Head: 3

Crew Berths: 1

Crew Cabins: 1

25 sq.m. Double master cabin aft with ensuite Sicilian stone bathroom including a bathtub

Forward, where the wheelhouse stands, is a self-contained module.

At the front, square level, a cabin with a single bed, 6 m2, with its four portholes, its bathroom and its worktable.

At the bottom of the 7-step staircase, bow side, an integrated space for children: a large cabin - game room of 12 m2, with two berths, large storage spaces, a double worktable and a bookcase.

On the other side of the landing, on the starboard side, a bathroom with integrated shower and toilet, and on the port side, a large double cabin with two portholes and worktable, 9 m2, a place of calm and concentration.

ACCOMMODATION EQUIPMENT:

TV

Music sound system

HEATING:

Yes

GALLEY/LAUNDRY:

American galley including:

Oven

Vitro ceramic hob

Fridge/Freezer

Dishwasher

Washing machine (not in galley)

NAVIGATION:

GPS

Plotter

VHF

Log



Depth sounder
Autopilot
Compass
Charts

DECK:

Double gypsy anchor windlass
Anchor
Aft deck table with chairs
Manual davits

SAFETY:

Liferaft 8/10 persons - crew saver
Portable fire extinguishers
Lifejackets
Inflatable lifejackets
Lifebuoys
Flares
EPIRB

TENDERS/TOYS:

Golden Ship HSR310 / Engine: Selva 8 hp 4 stroke

SERVICE HISTORY AND CONSTRUCTION:

Refitted: 2008, 2021

BROKERS COMMENTS:

Built in 1939 as a tug in Belgium at the Rupelmonde shipyard for the French government – she participated in the operation Overlord in 1945. Converted into a cozy family home over the last 30 years this converted classic tug represents the ideal yacht to explore the Mediterranean in comfort with great character.

Very bright casual interior together with a large deck areas to enjoy al fresco.

The perfect choice for those who want to feel special. Just reduced in price.

Dolphin Yachts are the exclusive central sales agents for Akai Sango.

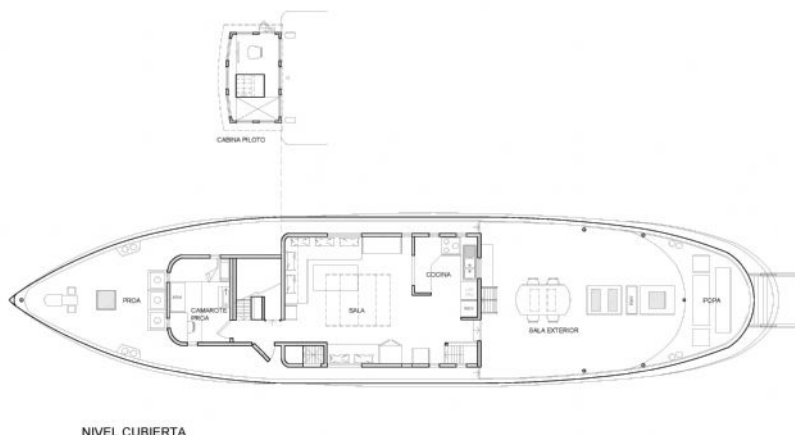
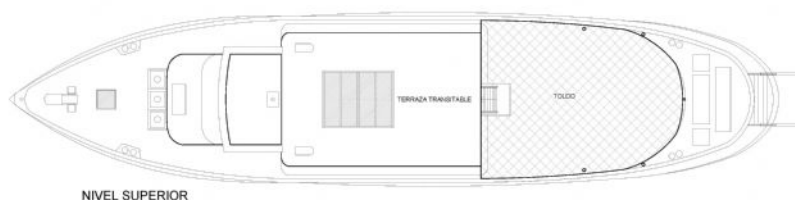
LYING:

Spain





Layout Plans



The particulars presented in this brochure are based on information provided by the sellers and are believed to be correct, although we cannot be liable for any inaccuracy. A prospective buyer is strongly advised to check these particulars and where appropriate and at his own expense to employ a qualified marine surveyor and / or have an engine trial conducted which if conducted by us shall not imply any liability on our part.