



Dolphin Yachts

INTERNATIONAL YACHT BROKERS

Dolphin Yachts S.L.

Club de Mar

07015 Palma de Mallorca

Spain

info@dolphin-yachts.com



Rupelmonde Converted Tug

Hersteller:	Rupelmonde	LüA:	25.50m (83'7")
Modell:	Converted Tug	Breite:	5.10m (16'7")
Jahr:	1939	Tiefgang:	2.65m (8'7")
Rumpfmateriail:	Stahl	Treibstoff:	5.700 Litres
Räumlichkeiten:	7 berths in 4 cabins	Wasser:	700 Litres
Designer:	Builder	Motoren:	1 x 490hp Iveco
Verdrängung:	110 tonnes	Geschwindigkeit:	12 Knots

395.000 € MwSt bezahlt



MOTOREN:

1 x 490hp Iveco C13ENTM5010

Motorstunden: 750 aprox.

GESCHWINDIGKEIT:

Maximal: 12 knots aprox.

Reise: 9 knots aprox.

FASSUNGSVERMÖGEN:

Treibstoff: 5700 Litres

Wasser: 700 Litres

MECHANISCHE AUSTRÜSTUNG:

Iveco ME C13ENTM5010 (2007) 490 CV. 6 cylinders. Speed (estimated max speed of yacht) 12 knots.

Engine hours (hours) : 750 H (consumption at 8/9 knots: 35 liters)

Generator: Vetus diesel VH4. 27 KWA (2800h) (2007)

Selmar Watermaker: 125 liters / hour.

Battery Charger

RÄUMLICHKEITEN:

Berths: 7

Cabins: 4

Head: 3

Crew Berths: 1

Crew Cabins: 1

25 sq.m. Double master cabin aft with ensuite Sicilian stone bathroom including a bathtub

Forward, where the wheelhouse stands, is a self-contained module.

At the front, square level, a cabin with a single bed, 6 m², with its four portholes, its bathroom and its worktable.

At the bottom of the 7-step staircase, bow side, an integrated space for children: a large cabin - game room of 12 m², with two berths, large storage spaces, a double worktable and a bookcase.

On the other side of the landing, on the starboard side, a bathroom with integrated shower and toilet, and on the port side, a large double cabin with two portholes and worktable, 9 m², a place of calm and concentration.

INNENAUSSTATTUNG:

TV

Music sound system

HEIZUNG:

Yes

KOMBÜSE/WASCHKÜCHE:

American galley including:

Oven

Vitro ceramic hob

Fridge/Freezer

Dishwasher

Washing machine (not in galley)

NAVIGATION:

GPS

Plotter

VHF

Log



Depth sounder
Autopilot
Compass
Charts

DECK:

Double gypsy anchor windlass
Anchor
Aft deck table with chairs
Manual davits

SICHERHEIT:

Liferaft 8/10 persons - crew saver
Portable fire extinguishers
Lifejackets
Inflatable lifejackets
Lifebuoys
Flares
EPIRB

BEIBOOTE/SPIELZEUG:

Golden Ship HSR310 / Engine: Selva 8 hp 4 stroke

WARTUNGSGESCHICHTE UND BAUWEISE:

Refitted: 2008, 2021

ANMERKUNGEN DES MAKLERS:

Built in 1939 as a tug in Belgium at the Rupelmonde shipyard for the French government – she participated in the operation Overlord in 1945. Converted into a cozy family home over the last 30 years this converted classic tug represents the ideal yacht to explore the Mediterranean in comfort with great character.

Very bright casual interior together with a large deck areas to enjoy al fresco.

The perfect choice for those who want to feel special. Just reduced in price.

Dolphin Yachts are the exclusive central sales agents for Akai Sango.

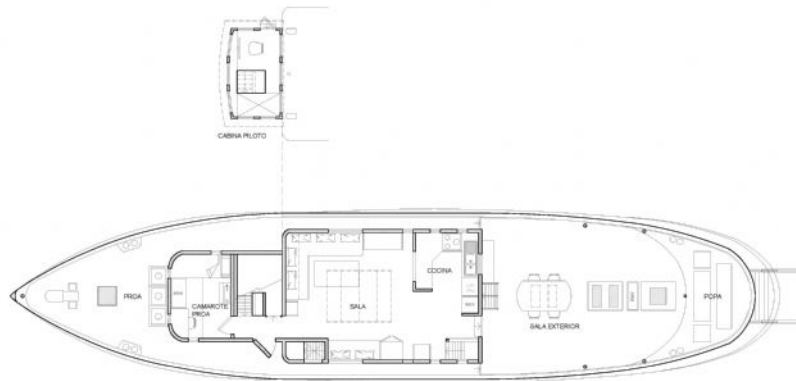
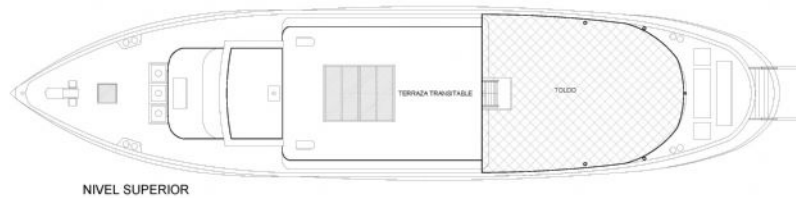
STANDORT:

Spain





Grundriss



Die Angaben in dieser Beschreibung werden als korrekt angenommen, ihre Exaktheit ist jedoch weder garantiert noch können sie als Vertragsbestandteil genutzt werden. Ein unabhängiges Gutachten ist immer empfehlenswert. Dieses Schiff wird angeboten unter Vorbehalt von Zwischenverkauf, Preisänderung oder Angebotsrücktritt ohne Mitteilung.