



Dolphin Yachts

INTERNATIONAL YACHT BROKERS

Dolphin Yachts S.L.

Club de Mar

07015 Palma de Mallorca

Spain

info@dolphin-yachts.com



Rupelmonde Converted Tug

Constructor:	Rupelmonde	Eslora total:	25.50m (83'7")
Modelo:	Converted Tug	Manga:	5.10m (16'7")
Año:	1939	Calado:	2.65m (8'7")
Material:	Acero	Combustible:	5.700 Litres
Distribución:	7 berths in 4 cabins	Agua:	700 Litres
Arquitecto:	Builder	Motores:	1 x 490hp Iveco
Desplazamiento:	110 tonnes	Velocidad:	12 Knots

395.000 € EU IVA pagado



MOTORES:

1 x 490hp Iveco C13ENTM5010

Horas Motor: 750 aprox.

VELOCIDAD:

Máxima: 12 knots aprox.

De Crucero: 9 knots aprox.

CAPACIDADES:

Combustible: 5700 Litres

Agua: 700 Litres

EQUIPO MECÁNICO:

Iveco ME C13ENTM5010 (2007) 490 CV. 6 cylinders. Speed (estimated max speed of yacht) 12 knots.

Engine hours (hours) : 750 H (consumption at 8/9 knots: 35 liters)

Generator: Vetus diesel VH4. 27 KWA (2800h) (2007)

Selmar Watermaker: 125 liters / hour.

Battery Charger

DISTRIBUCIÓN:

Berths: 7

Cabins: 4

Head: 3

Crew Berths: 1

Crew Cabins: 1

25 sq.m. Double master cabin aft with ensuite Sicilian stone bathroom including a bathtub

Forward, where the wheelhouse stands, is a self-contained module.

At the front, square level, a cabin with a single bed, 6 m², with its four portholes, its bathroom and its worktable.

At the bottom of the 7-step staircase, bow side, an integrated space for children: a large cabin - game room of 12 m², with two berths, large storage spaces, a double worktable and a bookcase.

On the other side of the landing, on the starboard side, a bathroom with integrated shower and toilet, and on the port side, a large double cabin with two portholes and worktable, 9 m², a place of calm and concentration.

EQUIPO DE INTERIORES:

TV

Music sound system

CALEFACCIÓN:

Yes

COCINA/LAVANDERÍA:

American galley including:

Oven

Vitro ceramic hob

Fridge/Freezer

Dishwasher

Washing machine (not in galley)

NAVEGACIÓN:

GPS

Plotter

VHF

Log



Depth sounder
Autopilot
Compass
Charts

EQUIPO DE CUBIERTA:

Double gypsy anchor windlass
Anchor
Aft deck table with chairs
Manual davits

SEGURIDAD:

Liferaft 8/10 persons - crew saver
Portable fire extinguishers
Lifejackets
Inflatable lifejackets
Lifebuoys
Flares
EPIRB

ANEXOS/JUGUETES:

Golden Ship HSR310 / Engine: Selva 8 hp 4 stroke

HISTORIAL DE MANTENIMIENTO:

Refitted: 2008, 2021

COMENTARIO DEL AGENTE:

Built in 1939 as a tug in Belgium at the Rupelmonde shipyard for the French government – she participated in the operation Overlord in 1945. Converted into a cozy family home over the last 30 years this converted classic tug represents the ideal yacht to explore the Mediterranean in comfort with great character.

Very bright casual interior together with a large deck areas to enjoy al fresco.

The perfect choice for those who want to feel special. Just reduced in price.

Dolphin Yachts are the exclusive central sales agents for Akai Sango.

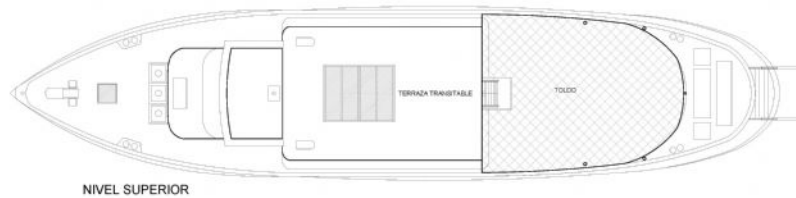
LUGAR:

Spain

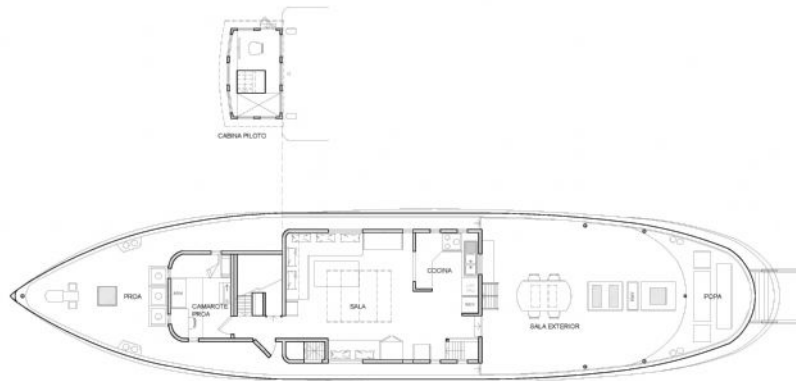




Plan de la distribución



NIVEL SUPERIOR



NIVEL CUBIERTA



NIVEL INFERIOR

Las informaciones presentados en esta descripción son probablemente correctas pero su exactitud no esta garantizada y no podrán ser utilizados contractualmente. Una peritación independiente es siempre recomendable. Este barco puede ser retirado de la venta sin previo aviso.