



Dolphin Yachts

INTERNATIONAL YACHT BROKERS

Dolphin Yachts S.L.

Club de Mar

07015 Palma de Mallorca

Spain

info@dolphin-yachts.com



Rupelmonde Converted Tug

Fabricant:	Rupelmonde	Longueur hors tout:	25.50m (83'7")
Modèle:	Converted Tug	Largeur:	5.10m (16'7")
Année:	1939	Tirant d'eau:	2.65m (8'7")
Matériau de la coque:	Acier	Carburant:	5.700 Litres
Aménagement:	7 berths in 4 cabins	Eau:	700 Litres
Architecte:	Builder	Moteurs:	1 x 490hp Iveco
Déplacement:	110 tonnes	Vitesse:	12 Knots

395.000 € TVA payée



MOTEURS:

1 x 490hp Iveco C13ENTM5010

Nombre d'heures: 750 aprox.

VITESSE:

Max: 12 knots aprox.

Croisière: 9 knots aprox.

CAPACITÉ DES RESERVOIRS:

Carburant: 5700 Litres

Eau: 700 Litres

ÉQUIPEMENTS MÉCANIQUES:

Iveco ME C13ENTM5010 (2007) 490 CV. 6 cylinders. Speed (estimated max speed of yacht) 12 knots.

Engine hours (hours) : 750 H (consumption at 8/9 knots: 35 liters)

Generator: Vetus diesel VH4. 27 KWA (2800h) (2007)

Selmar Watermaker: 125 liters / hour.

Battery Charger

AMÉNAGEMENT:

Berths: 7

Cabins: 4

Head: 3

Crew Berths: 1

Crew Cabins: 1

25 sq.m. Double master cabin aft with ensuite Sicilian stone bathroom including a bathtub

Forward, where the wheelhouse stands, is a self-contained module.

At the front, square level, a cabin with a single bed, 6 m2, with its four portholes, its bathroom and its worktable.

At the bottom of the 7-step staircase, bow side, an integrated space for children: a large cabin - game room of 12 m2, with two berths, large storage spaces, a double worktable and a bookcase.

On the other side of the landing, on the starboard side, a bathroom with integrated shower and toilet, and on the port side, a large double cabin with two portholes and worktable, 9 m2, a place of calm and concentration.

EQUIPMENTS D'AMÉNAGEMENT:

TV

Music sound system

CHAUFFAGE:

Yes

CARRÉ:

American galley including:

Oven

Vitro ceramic hob

Fridge/Freezer

Dishwasher

Washing machine (not in galley)

NAVIGATION:

GPS

Plotter

VHF

Log



Depth sounder
Autopilot
Compass
Charts

PONT:

Double gypsy anchor windlass
Anchor
Aft deck table with chairs
Manual davits

SÉCURITÉ:

Liferaft 8/10 persons - crew saver
Portable fire extinguishers
Lifejackets
Inflatable lifejackets
Lifebuoys
Flares
EPIRB

CANOTS/JOUETS:

Golden Ship HSR310 / Engine: Selva 8 hp 4 stroke

HISTOIRE SERVICE ET CONSTRUCTION:

Refitted: 2008, 2021

COMMENTAIRE DU COURTIER:

Built in 1939 as a tug in Belgium at the Rupelmonde shipyard for the French government – she participated in the operation Overlord in 1945. Converted into a cozy family home over the last 30 years this converted classic tug represents the ideal yacht to explore the Mediterranean in comfort with great character.

Very bright casual interior together with a large deck areas to enjoy al fresco.

The perfect choice for those who want to feel special. Just reduced in price.

Dolphin Yachts are the exclusive central sales agents for Akai Sango.

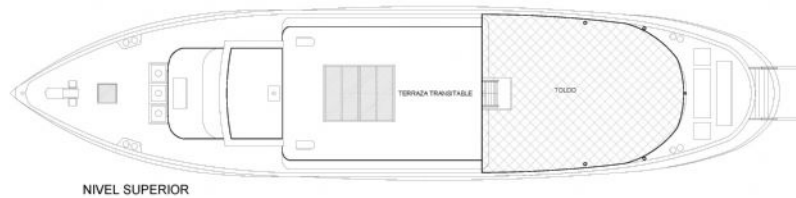
EMPLACEMENT:

Spain

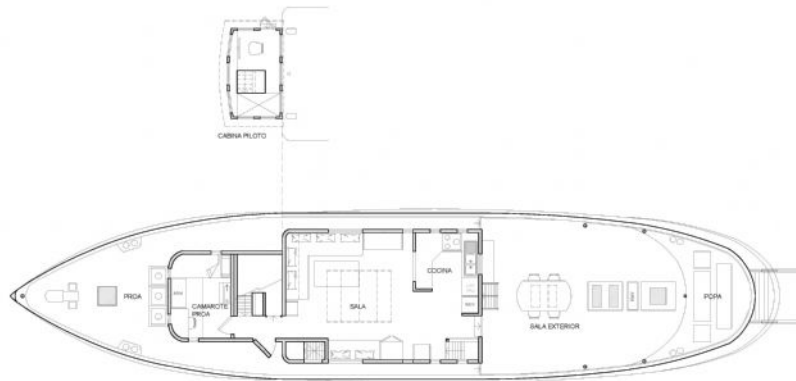




Distribution



NIVEL SUPERIOR



NIVEL CUBIERTA



NIVEL INFERIOR

Les informations présentées dans cette brochure sont probablement correctes mais leur exactitude n'est pas garantie et ne pourra pas être utilisée pour un contrat. Une expertise Independent est toujours recommandée. Ce bateau peut être retiré de la vente sans préavis.