



# Dolphin Yachts

INTERNATIONAL YACHT BROKERS

Dolphin Yachts S.L.

Club de Mar

07015 Palma de Mallorca

Spain

info@dolphin-yachts.com



## Clelands shipbuildings Custom TSDY

<b>Constructor:</b>	Clelands shipbuildings	<b>Eslora total:</b>	33.83m (111'0")
<b>Modelo:</b>	Custom TSDY	<b>Manga:</b>	6.74m (22'1")
<b>Año:</b>	1960	<b>Calado:</b>	2.77m (9'1")
<b>Material:</b>	Acero/Alum	<b>Combustible:</b>	39.150 Litres
<b>Distribución:</b>	8 berths in 4 cabins	<b>Agua:</b>	11.700 Litres
<b>Arquitecto:</b>	Frederick R. Parker	<b>Motores:</b>	2 x 700hp MAN
<b>Desplazamiento:</b>	173 tons (GRT)	<b>Velocidad:</b>	13 Knots

1.500.000 € EU IVA pagado



**MOTORES:**

2 x 700hp MAN

Horas Motor: 1500 aprox.

**VELOCIDAD:**

Máxima: 13 knots aprox.

De Crucero: 10 knots aprox.

**AUTONOMÍA:**

5000 nautical miles

**CAPACIDADES:**

Combustible: 39150 Litres

Agua: 11700 Litres

**EQUIPO MECÁNICO:**

Generators 2 X Onan 45 kw 1 X Onan 30 Kw

Stabilizers VOSPER fins

Water Maker – Horizon Seafari 300 LPH

**DISTRIBUCIÓN:**

Berths: 8

Cabins: 4

Head: 4

Crew Berths: 5

Crew Cabins: 3

4 cabins for 8 guests - Separate Full Beam Master cabin in the lower deck fore with en suite, VIP cabin plus two twin cabins

Crew Accommodation

Captain + 4 crew in 3 cabins in the lower foredeck

**NAVEGACIÓN:**

Simrad,

Radar,

GPS

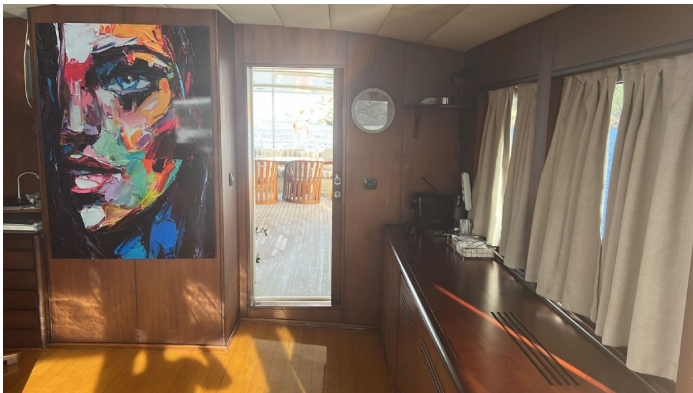
2 Icon VHF

**COMENTARIO DEL AGENTE:**

Originally built by Cleland's in 1960 the classic gentleman's yacht underwent a major refit in 2005 with new engines, generator and interior. She offers accommodation for 8 guests in 1 master, 1 VIP and 2 twin cabins. Her boat deck features a modern covered bar area, as well as an al fresco dining table.

Together with fin stabilizers and compliant with ABS class requirements for the construction, she would be the perfect vessel to explore remote places anywhere on the planet. Spanish Matriculation tax paid.

**LUGAR:**





Las informaciones presentados en esta descripción son probablemente correctas pero su exactitud no esta garantizada y no podrán ser utilizados contractualmente. Una peritación independiente es siempre recomendable. Este barco puede ser retirado de la venta sin previo aviso.