



Dolphin Yachts

INTERNATIONAL YACHT BROKERS

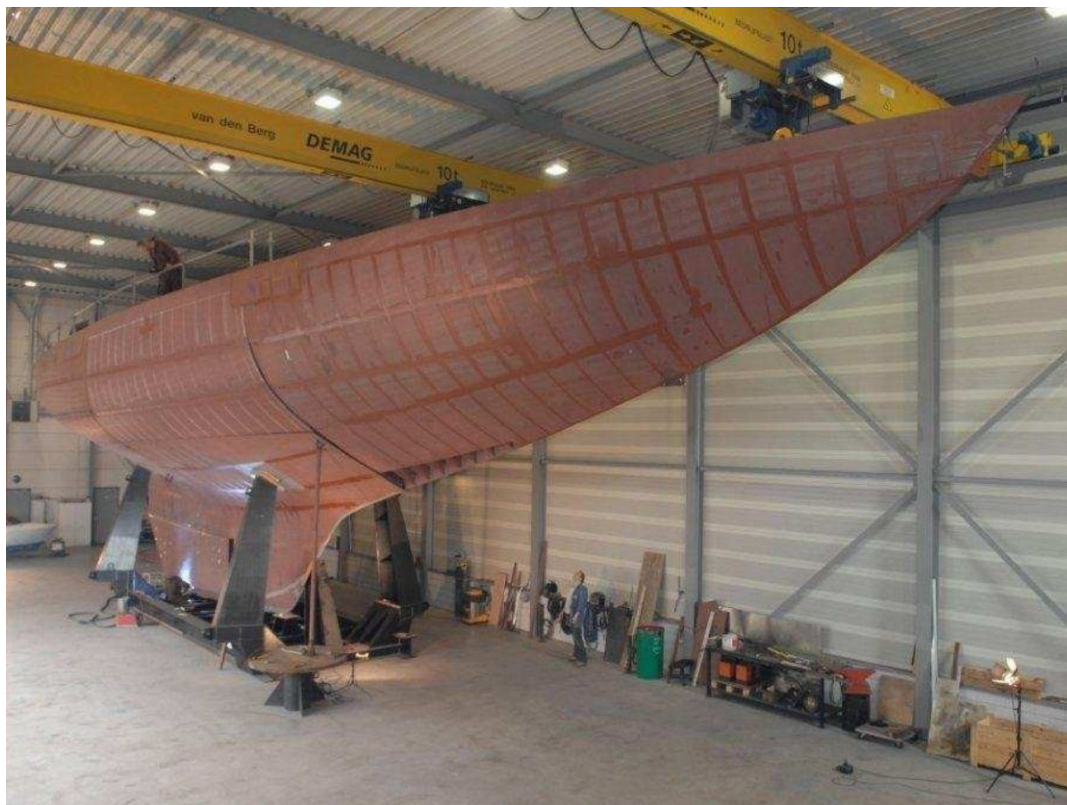
Dolphin Yachts S.L.

Club de Mar

07015 Palma de Mallorca

Spain

info@dolphin-yachts.com



Graafship Herreshoff Schooner

Constructor:	Graafship	Eslora total:	53.88m (176'8")
Modelo:	Herreshoff Schooner	Manga:	7.37m (24'2")
Año:	2013	Calado:	5.06m (16'6")
Material:	Acero		
Distribución:	8 berths in 4 cabins		
Arquitecto:	Nathanael G. Herreshoff		
Desplazamiento:	178 tonnes	Quilla:	Long

350.000 € EU IVA no pagado



MOTORES:

0 x 0hp

JARCIA Y VELAS:

COMENTARIO DEL AGENTE:

An opportunity at a fraction of her cost to acquire the steel hull of the two masted topsail gaff schooner classic Ingomar 1903 replica. Her ex-captain Charlie Barr put her to the test and said "Ingomar is the best of cruising yachts you will find anywhere"

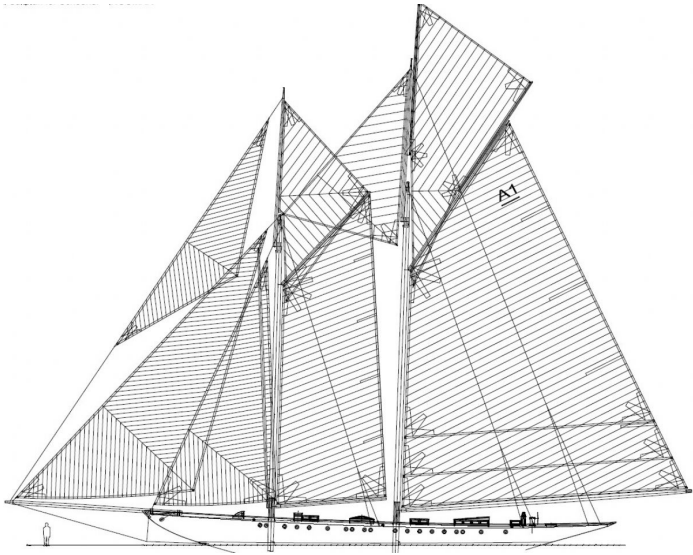
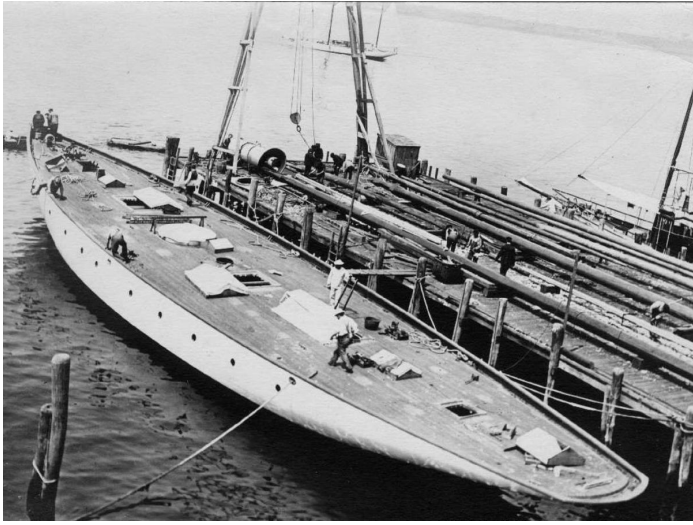
Nathanael Herreshoff described her as "a wonderfully good schooner that easily proved to be the fastest of his kind".

The custom deckhouses are already made, and the owner has also accumulated many suitable parts, which will be sold separately.

She is currently lying in Holland (out of the water)

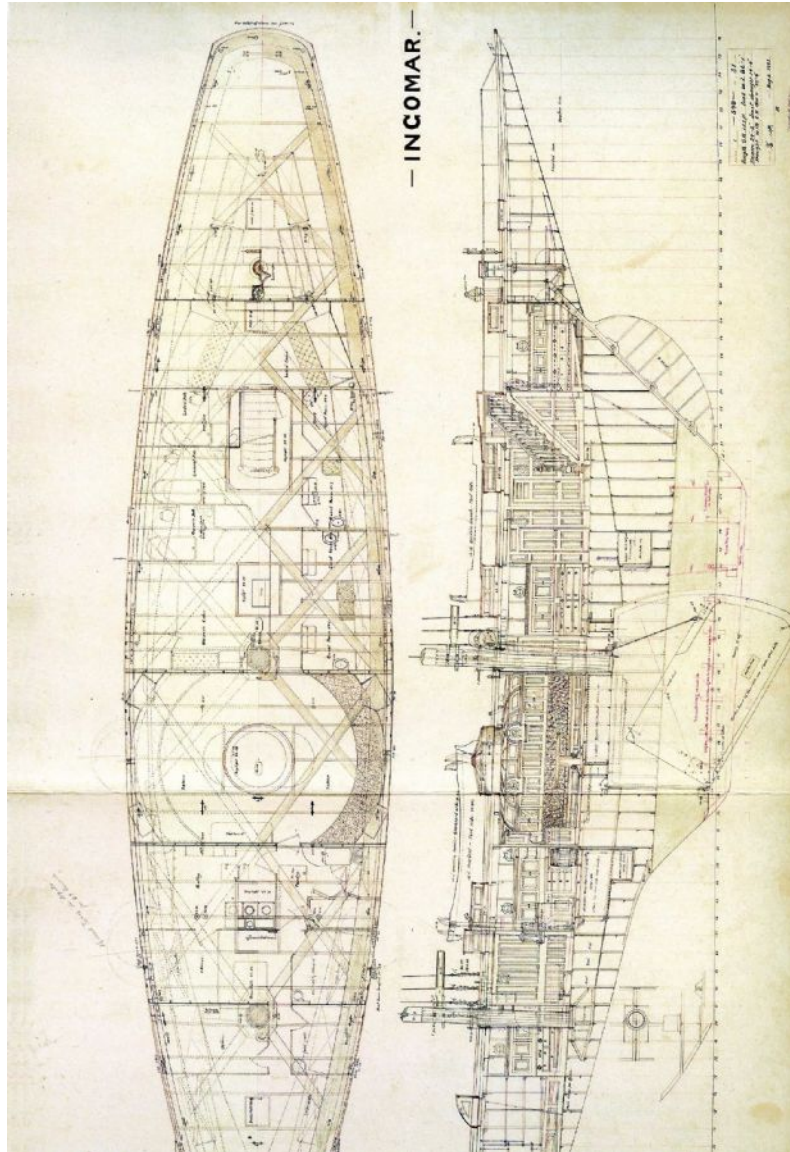
LUGAR:

Holland





Plan de la distribución



Las informaciones presentados en esta descripción son probablemente correctas pero su exactitud no esta garantizada y no podrán ser utilizados contractualmente. Una peritación independiente es siempre recomendable. Este barco puede ser retirado de la venta sin previo aviso.